

CITY OF RED DEER
 PLAN SHOWING
SUBDIVISION
 AFFECTING A PORTION OF
 LOT 1, BLOCK 1, PLAN 062 1407
 WITHIN THE
 S.E. 1/4 SEC. 4, TWP. 38, RGE. 27. W.4th M.
ALBERTA

2009
 BY: JESSICA BARICH, A.L.S.
 SCALE : 1 : 1000



NOTES :

Distances are shown in metres and decimals thereof
 Distances along curved boundaries are ARC measurements.
 Area to be Registered contains 2.414 hectares.
 This plan consists of 23 lots
 Bearings are GRID and were derived from GPS observations using ASCM's as shown.

DATUM : NAD 83
 PROJECTION : 3° Transverse Mercator
 REFERENCE MERIDIAN: 114° West
 COMBINED FACTOR : 0.999766

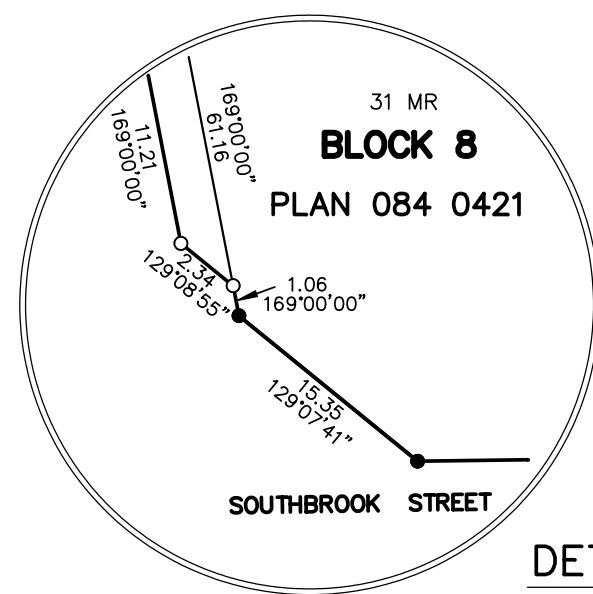
CO-ORDINATE VALUES FOR POSITIONS OCCUPIED BY MONUMENTS FOUND OR PLACED BY THIS SURVEY,
 SURVEY CONTROL MARKERS USED, REFERENCE MONUMENTS INSTALLED AND THE LOCATION
 OF ALL MONUMENTS TO BE PLACED IN ACCORDANCE WITH SECTION 47 OF THE SURVEYS ACT,
 ARE SHOWN ON SHEET 2 OF 2

LEGEND :

- Portion to be Registered by this survey is outlined thus
- Statutory Iron Posts found are shown thus
- Statutory Iron Posts planted and marked P085 are shown thus
- Drill Holes planted are shown thus
- Beginning and End of Curves are shown thus or
- Alberta Survey Control Markers (ASCM) found are shown thus

ABBREVIATIONS (where applicable):

- | | | |
|--|-------|---------|
| Found abbreviated thus | ----- | Fd. |
| Statutory Iron Post abbreviated thus | ----- | I. |
| Mark abbreviated thus | ----- | Mk. |
| Established abbreviated thus | ----- | Est. |
| Re-established abbreviated thus | ----- | Re-est. |
| Reference abbreviated thus | ----- | Ref. |
| Hectare abbreviated thus | ----- | ha. |
| Radius abbreviated thus | ----- | R. |
| Radial Bearing abbreviated thus | ----- | (R) |
| Central Angle shown thus | ----- | Δ |
| Municipal Reserve abbreviated thus | ----- | MR |
| Public Utility Lot abbreviated thus | ----- | PUL |
| Section abbreviated thus | ----- | Sec. |
| Township abbreviated thus | ----- | Twp. |
| Range abbreviated thus | ----- | Rge. |
| Meridian abbreviated thus | ----- | M. |
| North abbreviated thus | ----- | N. |
| East abbreviated thus | ----- | E. |
| South abbreviated thus | ----- | S. |
| West abbreviated thus | ----- | W. |
| Right of Way abbreviated thus | ----- | R/W |
| Utility abbreviated thus | ----- | U. |
| Environmental Reserve abbreviated thus | ----- | ER |



CERTIFICATE : SECTION 47, THE SURVEYS ACT

REGISTERED ON THE _____
 AS NUMBER _____
 ALL STATUTORY POSTS WERE PLACED IN THE GROUND BETWEEN THE DATES OF _____ AND _____
 AND ARE POSITIONED IN ACCORDANCE WITH THE CO-ORDINATES SHOWN ON SHEET 2 OF 2, EXCEPT FOR THE FOLLOWING _____

REGISTRAR _____

LAND TITLES OFFICE

PLAN NO. _____

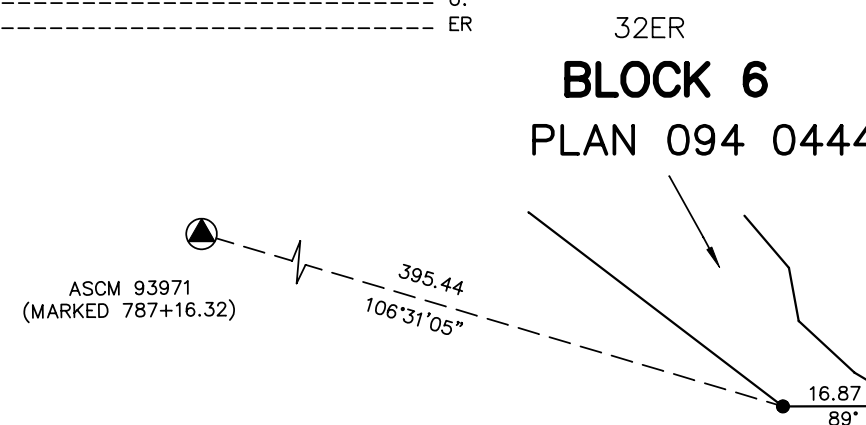
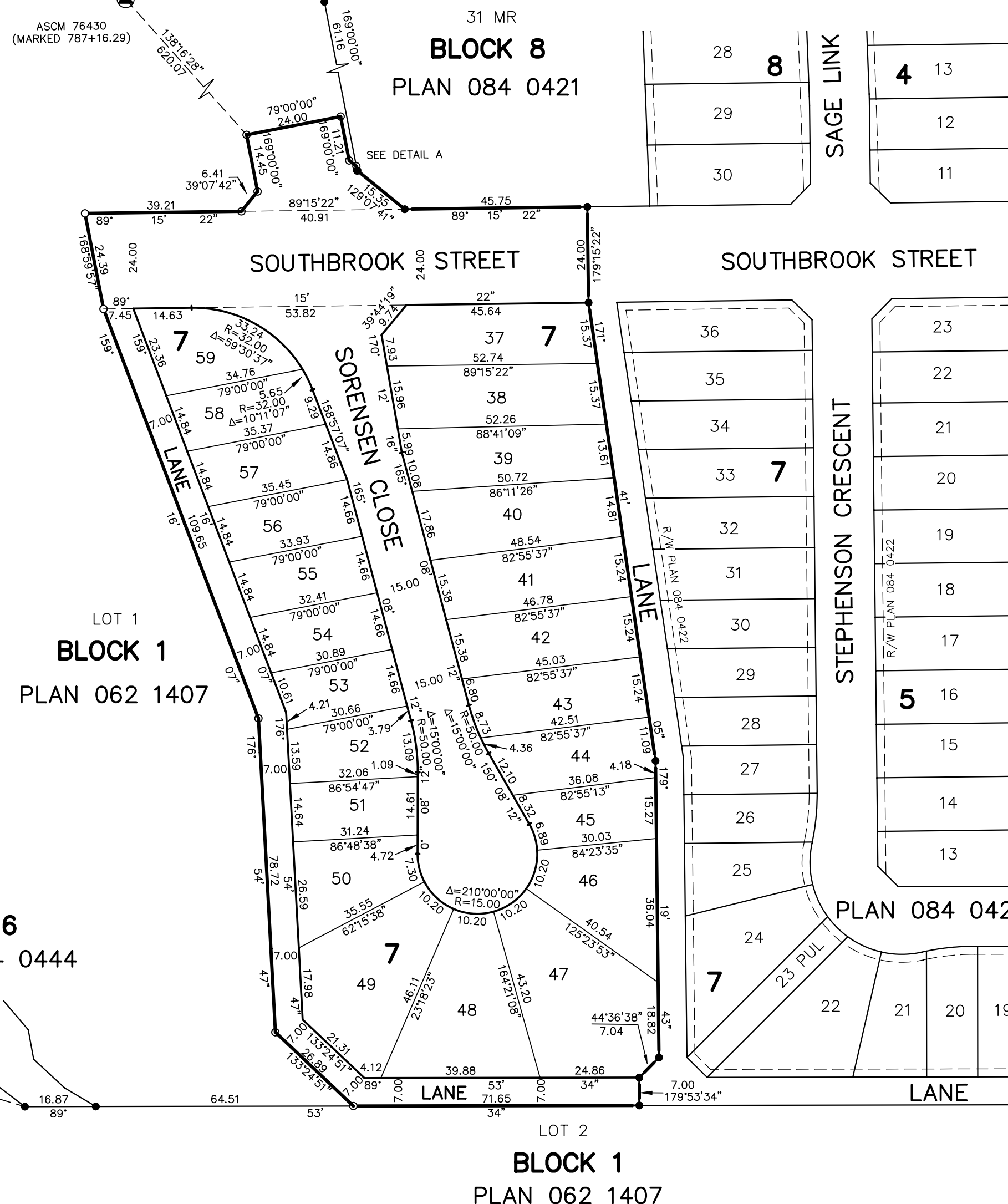
ENTERED AND REGISTERED _____

ON _____

INSTRUMENT NO : _____

A.D. REGISTRAR _____

SHEET 1 of 2



REGISTERED OWNERS:
 MELCOR DEVELOPMENTS LTD.

SUBDIVISION AUTHORITY:
 NAME: PARKLAND COMMUNITY PLANNING SERVICES
 FILE NO.: RED09315
 APPROVAL DATE: OCTOBER 13, 2009

SURVEYOR:
 NAME:
 JESSICA BARICH, A.L.S.
 SURVEYED BETWEEN THE DATES
 OF JANUARY 20, 2006
 AND 2009
 IN ACCORDANCE WITH THE
 PROVISIONS OF THE SURVEYS ACT



D.A. Watt Consulting
 #310, 3016 - 5th Avenue N.E.
 Calgary, AB T2A 6K4
 Phone: (403) 273-9001
 Fax: (403) 273-3440

DRAWING FILE NAME: 08L0196-400-L.DWG	CLIENT: ALTERRA ENG.
DRAWN BY: J.KENT	CHECKED BY: J.B.
FILE No: 08L0196.400	