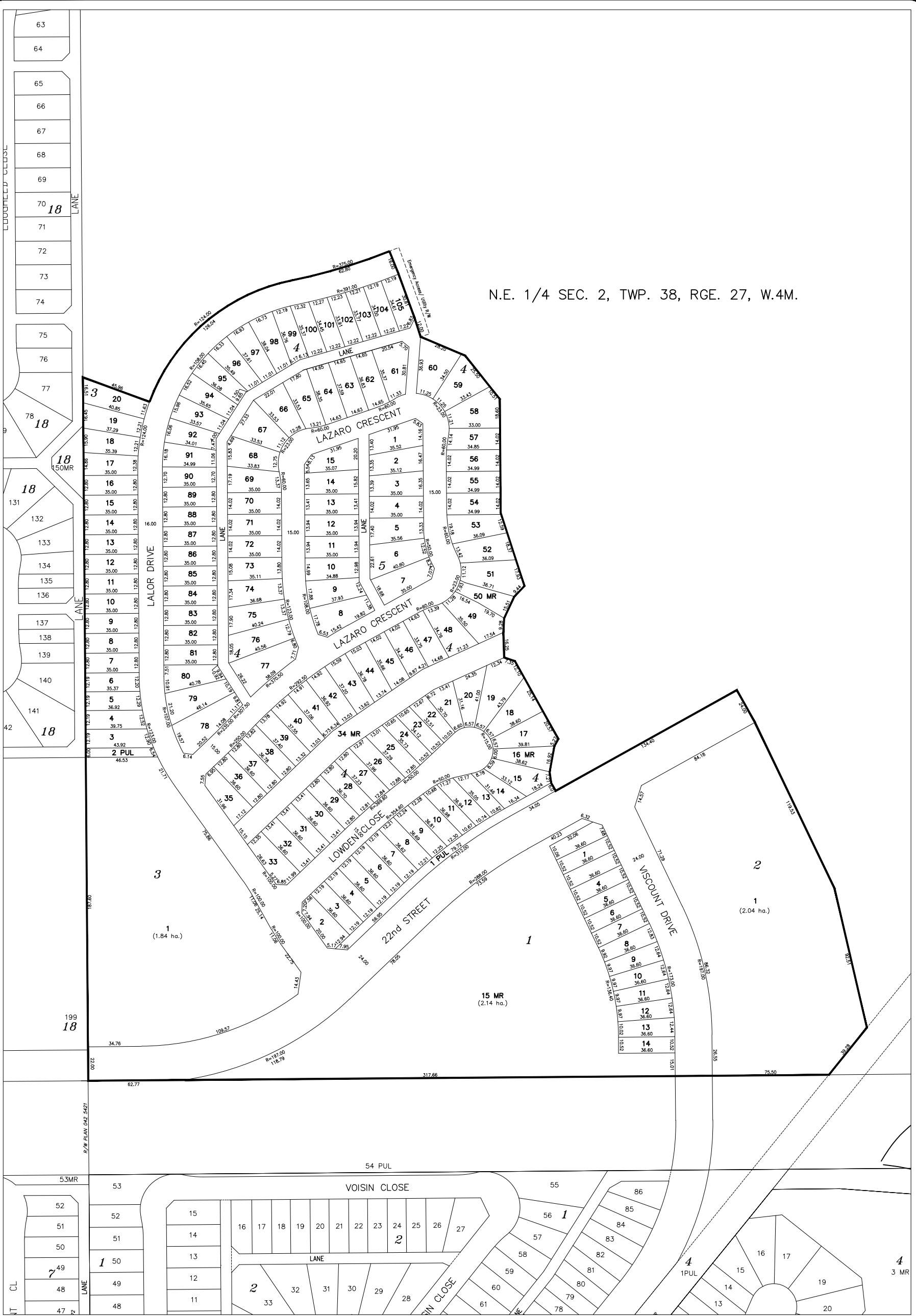


N.E. 1/4 SEC. 2, TWP. 38, RGE. 27, W.4M.



Note:
 Area to be subdivided contains 17.99 ha.
 and is outline thus: **— — — —**



LAREDO PHASE 1
 Tentative Subdivision Plan

Prepared for:
 Melcor Developments Ltd.
 Red Deer, Alberta

Stantec
 #1100, 4900-50th Street, Red Deer, AB T4N1X7
 Ph:(403) 341-3320 Fx:(403) 342-0969

DRAWN BY: SAS
 CHECKED BY:
 SCALE: 1:2,500
 PROJECT #: 1128

April, 2013