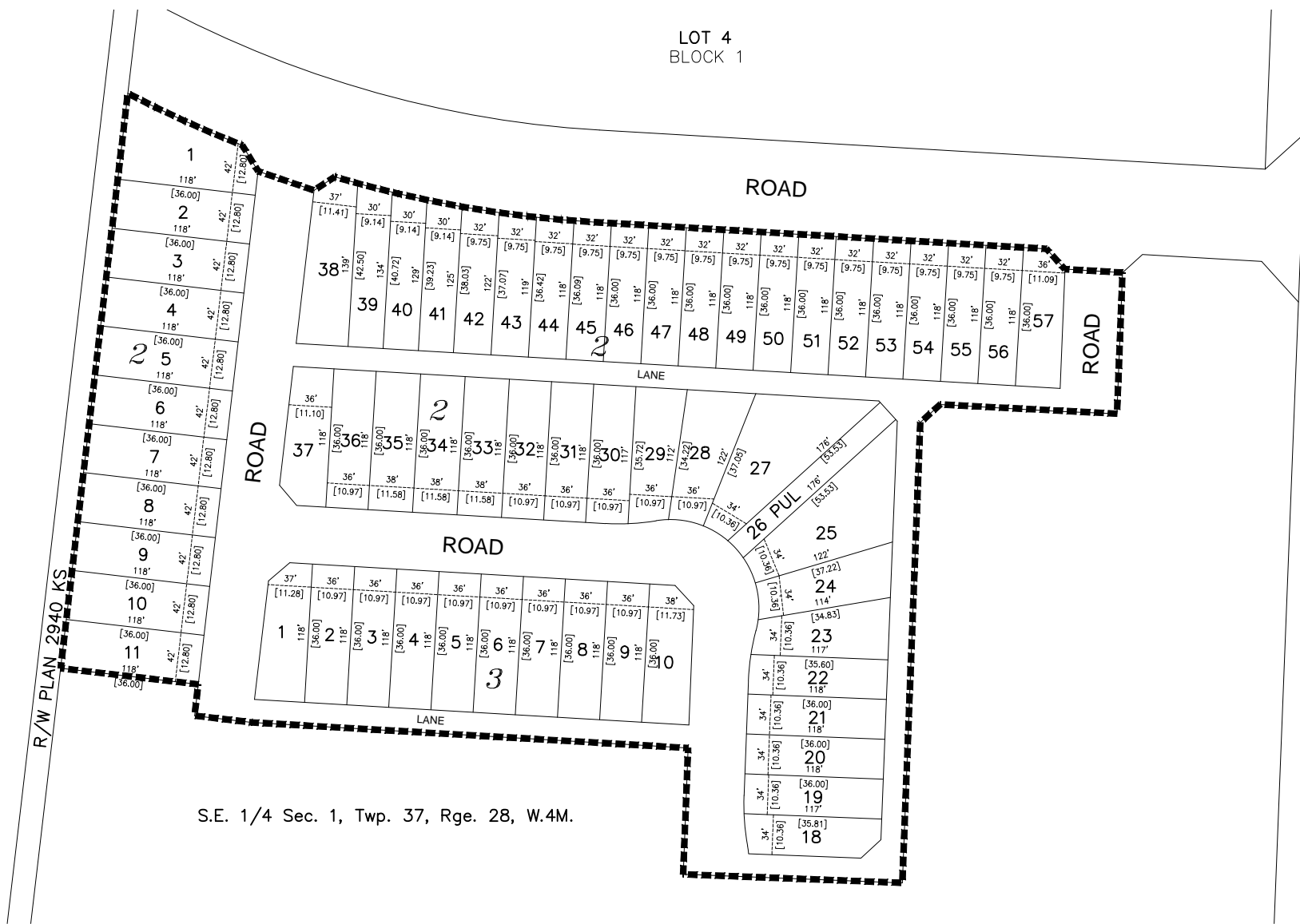


S.E. 1/4 Sec. 1, Twp. 37, Rge. 28, W.4M.

R/W PLAN 2940 KS

LOT 4
BLOCK 1



WASKASCOU AVENUE

S.E. 1/4 Sec. 1, Twp. 37, Rge. 28, W.4M.

Tentative Lotting Plan Oxford Landing Phase 1

Note:
Area to be subdivided contains 3.37 ha.
and is outline thus: **-----**

Prepared for:
Melcor Developments Ltd.
Red Deer, AB

Stantec
#1100, 4900-50th Street, Red Deer, AB T4N1X7
Ph: (403) 341-3320 Fx: (403) 342-0969

DRAWN BY: SAS
CHECKED BY: Checked
SCALE: NTS
PROJECT #: 112849336

March, 2014