

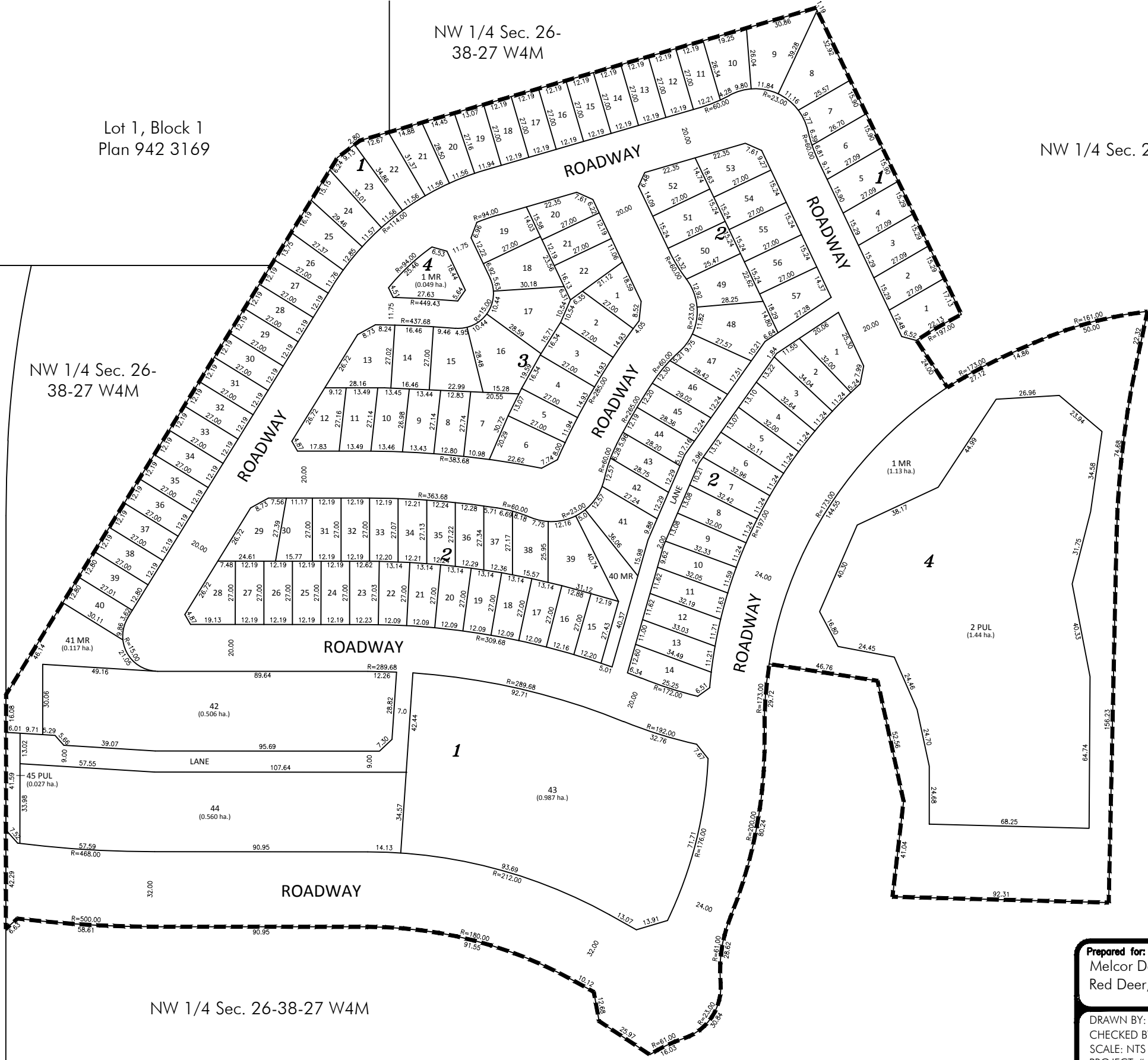
Lot 1, Block 1
Plan 942 3169

NW 1/4 Sec. 26-
38-27 W4M

NW 1/4 Sec. 26-38-27 W4M

30th AVENUE

NW 1/4 Sec. 26-
38-27 W4M



NW 1/4 Sec. 26-38-27 W4M

EVERGREEN

Tentative Subdivision Plan
City of Red Deer



Prepared for:
Melcor Developments
Red Deer, Alberta



#1100, 4900-50th Street, Red Deer, AB T4N1X7
Ph:(403) 341-3320 Fx:(403) 342-0969

DRAWN BY: SAS
CHECKED BY: GCL
SCALE: NTS
PROJECT #: 112849332

January, 2015