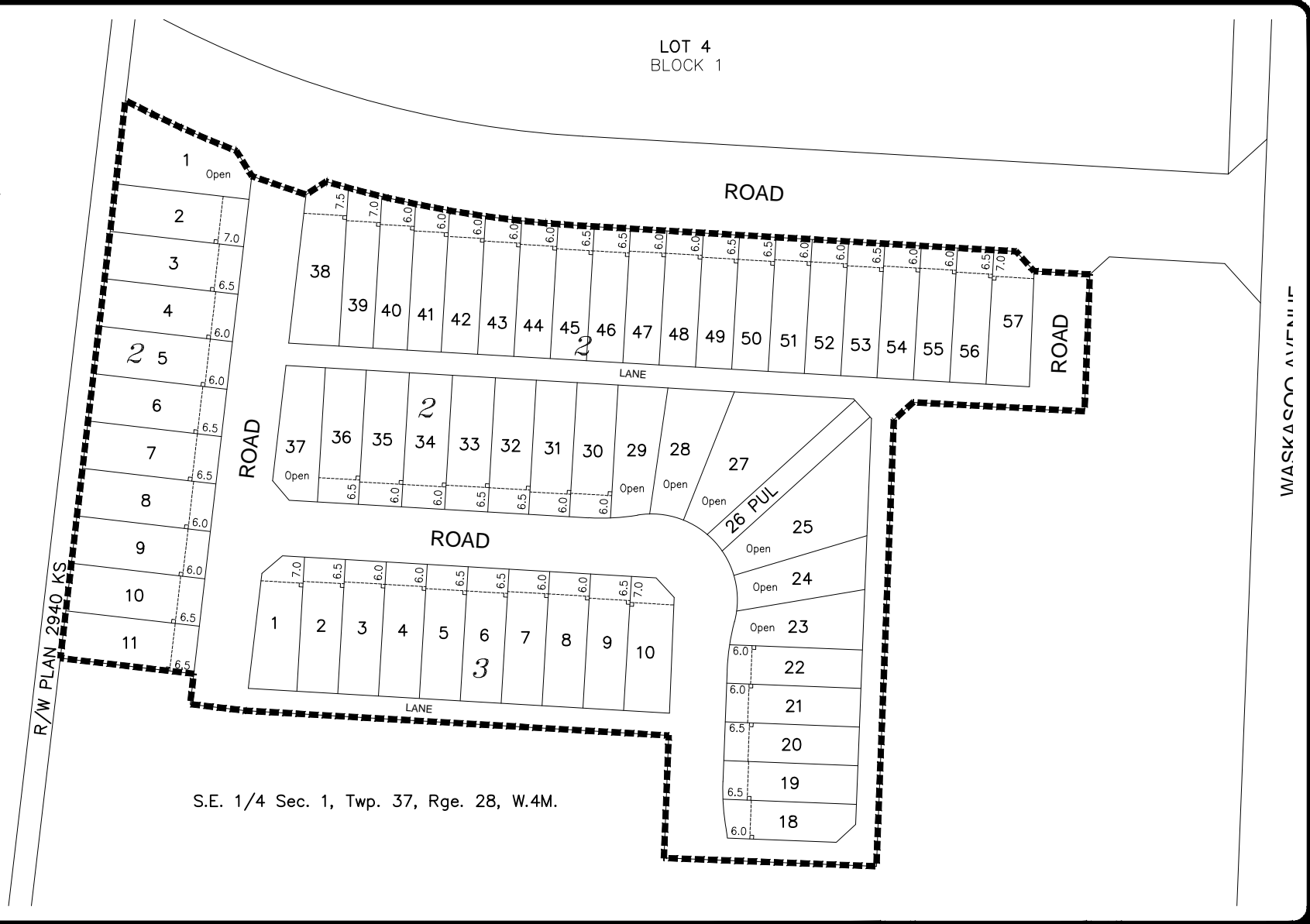


S.E. 1/4 Sec. 1, Twp. 37, Rge. 28, W.4M.

R/W PLAN 2940 KS

S.E. 1/4 Sec. 1, Twp. 37, Rge. 28, W.4M.

LOT 4  
BLOCK 1



WASKASCOU AVENUE

# Setback Plan Oxford Landing Phase 1

Prepared for:  
Melcor Developments Ltd.  
Red Deer, AB



#1100, 4900-50th Street, Red Deer, AB T4N1X7  
Ph: (403) 341-3320 Fx: (403) 342-0969

DRAWN BY: SAS  
CHECKED BY: Checked  
SCALE: NTS  
PROJECT #: 112849336

April, 2014