

S.E. 1/4 Sec. 1, Twp. 37, Rge. 28, W.4M.

R/W PLAN 2940 KS

S.E. 1/4 Sec. 1, Twp. 37, Rge. 28, W.4M.

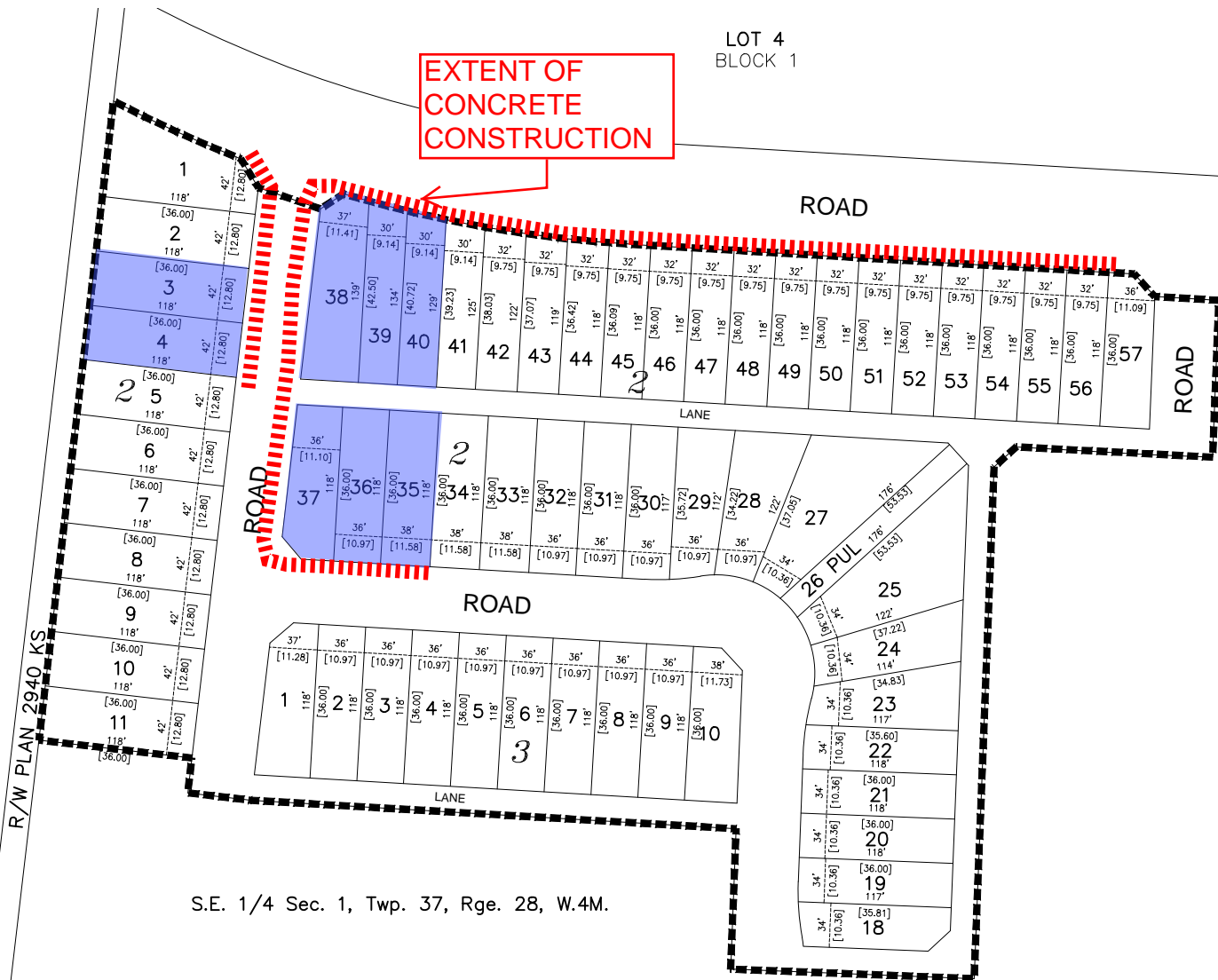
EXTENT OF CONCRETE CONSTRUCTION

LOT 4
BLOCK 1

ROAD

ROAD

WASKASCOU AVENUE



Tentative Lotting Plan
 Oxford Landing
 Phase 1

Note:
 Area to be subdivided contains 3.37 ha.
 and is outline thus:

Prepared for:
 Melcor Developments Ltd.
 Red Deer, AB

Stantec
 #1100, 4900-50th Street, Red Deer, AB T4N1X7
 Ph: (403) 341-3320 Fx: (403) 342-0969

DRAWN BY: SAS
 CHECKED BY: Checked
 SCALE: NTS
 PROJECT #: 112849336

March, 2014