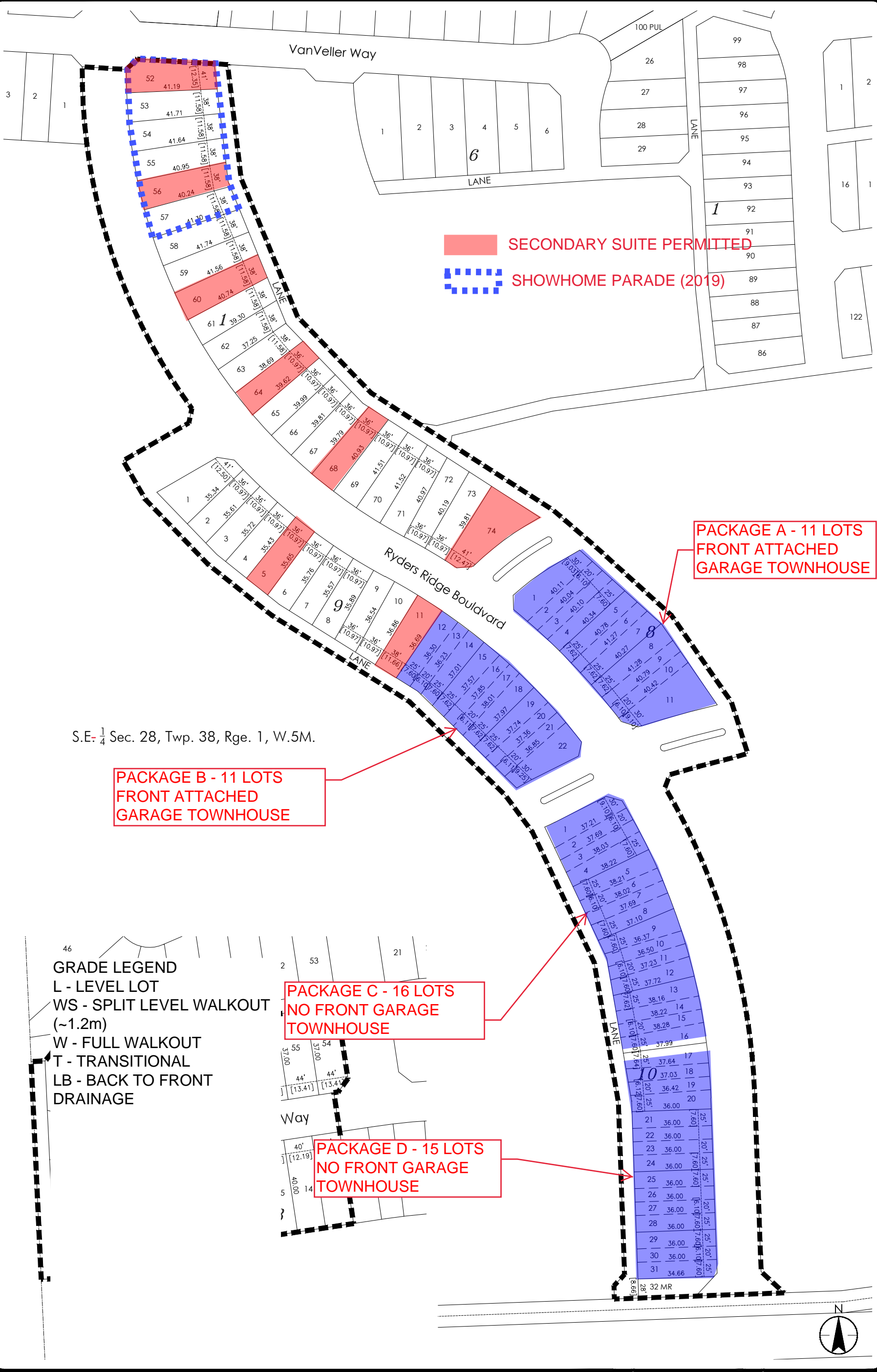


Updated 17/07/19, 2:16 PM By: SSTAFFORD

V:\1128\ACTIVE\112849553\05B\_DWGS\_LEGAL\49553-TN1.DWG



S.E. 1/4 Sec. 28, Twp. 38, Rge. 1, W.5M.

**PACKAGE B - 11 LOTS  
FRONT ATTACHED  
GARAGE TOWNHOUSE**

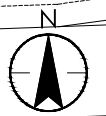
**PACKAGE C - 16 LOTS  
NO FRONT GARAGE  
TOWNHOUSE**

**PACKAGE D - 15 LOTS  
NO FRONT GARAGE  
TOWNHOUSE**

**PACKAGE A - 11 LOTS  
FRONT ATTACHED  
GARAGE TOWNHOUSE**

**SECONDARY SUITE PERMITTED**  
**SHOWHOME PARADE (2019)**

**GRADE LEGEND**  
 L - LEVEL LOT  
 WS - SPLIT LEVEL WALKOUT (~1.2m)  
 W - FULL WALKOUT  
 T - TRANSITIONAL  
 LB - BACK TO FRONT DRAINAGE



Phase 3  
 Lotting Plan  
 Vista at Ryder's Ridge

Prepared for:  
 Melcor Developments  
 Red Deer, Alberta

**Stantec**  
 #1100, 4900-50th Street, Red Deer, AB T4N1X7  
 Ph: (403) 341-3320 Fax: (403) 342-0969

DRAWN BY: SAS  
 CHECKED BY: GCL  
 SCALE: NTS  
 PROJECT #: 112849553

July, 2017