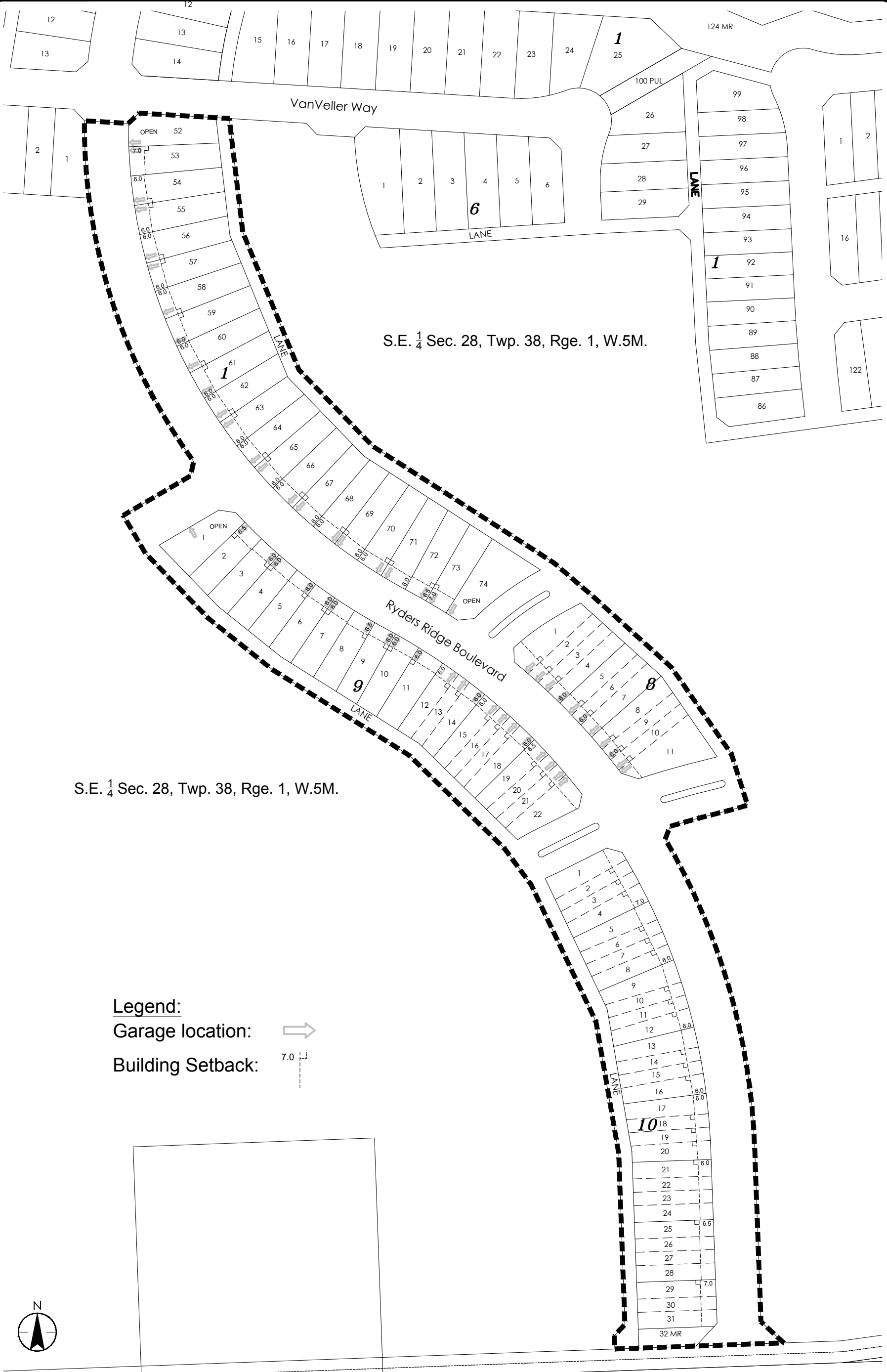

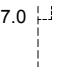


Updated 18/06/13, 8:37 AM By: STAFFORD

V:\1128\ACTIVE\112849553\058_DWGS_LEGAL\49553-TN1.DWG



S.E. 1/4 Sec. 28, Twp. 38, Rge. 1, W.5M.

Legend:
Garage location: 
Building Setback: 



Phase 3
Setback Plan
Vista at Ryder's Ridge

Prepared for:
Melcor Developments
Red Deer, Alberta



DRAWN BY: SAS
CHECKED BY: GCL
SCALE: 1:2,000
PROJECT #: 112849553

June, 2018

Memorial Trail