



JENSEN LAKES CROSSING

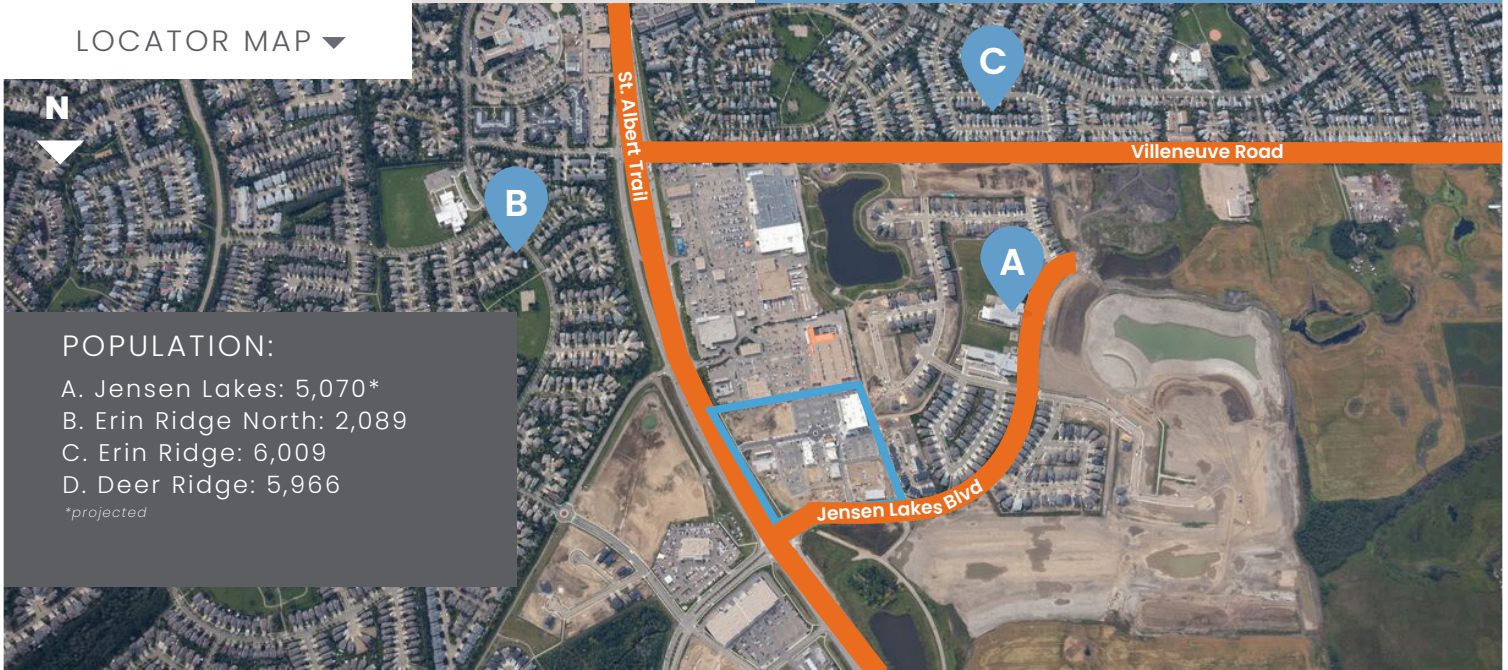
840 & 860 St. Albert Trail
Jensen Lakes Blvd
St. Albert, AB

AREA DEMOGRAPHICS:

Household Income:	Primary: \$180,905 Secondary: \$173,675
Traffic Count:	St. Albert Trail: 31,421
Trade Area Population:	Primary: 35,795 Secondary: 64,954
2023 Operating Costs:	\$8.57 - \$15.90

New retail centre in the growing St. Albert shopping district

LOCATOR MAP ▼



POPULATION:

- A. Jensen Lakes: 5,070*
- B. Erin Ridge North: 2,089
- C. Erin Ridge: 6,009
- D. Deer Ridge: 5,966

**projected*



CONTACT

Scott Sowinski
+1.780.945.2795
ssowinski@melcor.ca

Kelsey Bronetto
+1.780.945.4657
kbronetto@melcor.ca



@melcordev
melcorspace.ca



■ AVAILABLE
 ■ LEASED
 ■ PENDING
 ▲ SITEPLAN

JENSEN LAKES CROSSING

MAJOR TENANTS:



SITE HIGHLIGHTS:

Intersection	St. Albert Trail Jensen Lakes Boulevard
GLA	108,758 sf
Total Acres	17 Acres
2023 Operating Costs	\$8.57 - \$15.90 /sf



Master-planned and developed by Melcor



CONTACT

Scott Sowinski
 +1.780.945.2795
 ssowinski@melcor.ca

Kelsey Bronetto
 +1.780.945.4657
 kbronetto@melcor.ca

@melcordev
[melcorspace.ca](https://www.melcorspace.ca)