

NW 1/4 Sec. 26-38-27 W4M

Lot 1, Block 1
Plan 942 3169

NW 1/4 Sec. 26-38-27 W4M

30th AVENUE

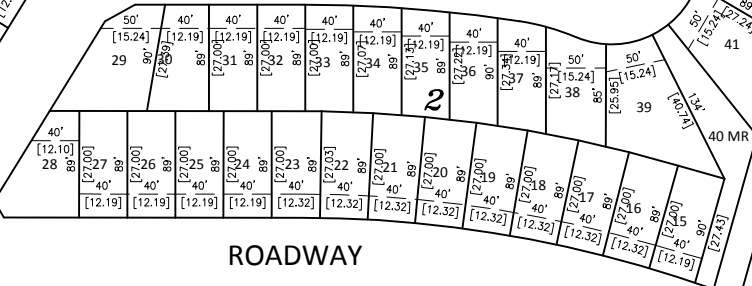
NW 1/4 Sec. 26-38-27 W4M

41 MR
(0.117 ha.)

4
1 MR
(0.048 ha.)

1 MR
(1.13 ha.)

2 PUL
(1.44 ha.)



EVERGREEN
Tentative Subdivision Plan
City of Red Deer

NW 1/4 Sec. 26-38-27 W4M



Prepared for:
Melcor Developments
Red Deer, Alberta



DRAWN BY: SAS
CHECKED BY: GCL
SCALE: NTS
PROJECT #: 112849332

May, 2015