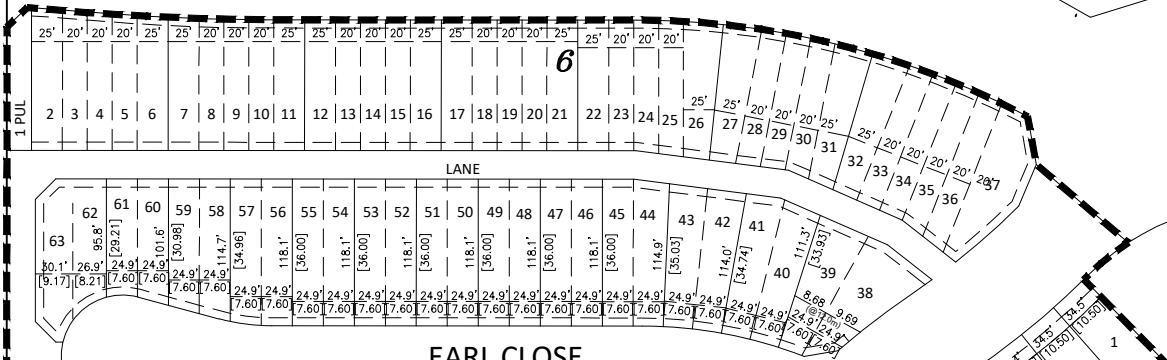
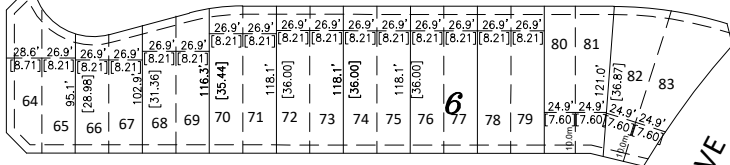


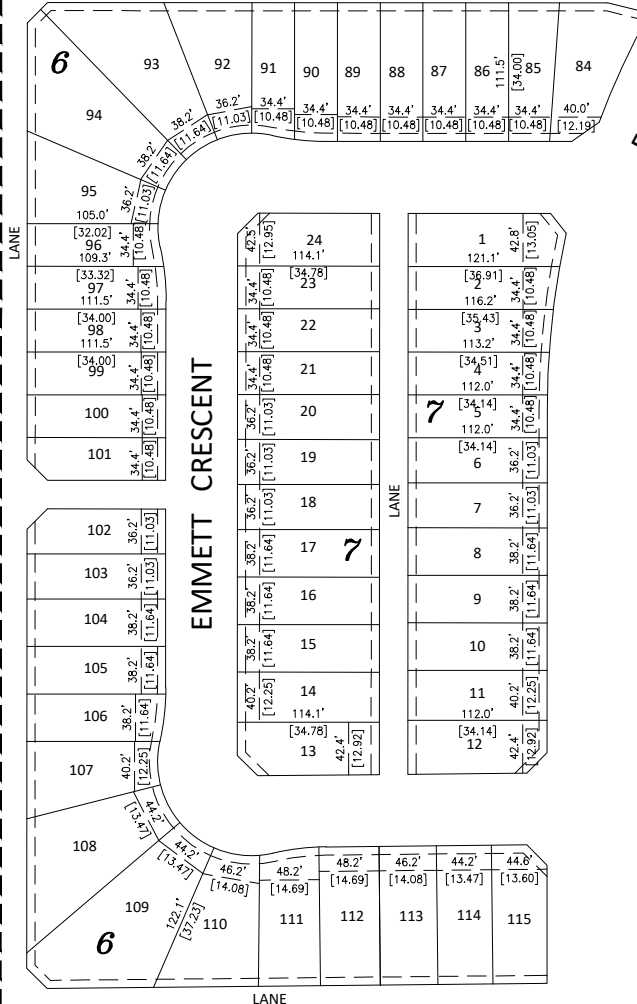
EVERGREEN WAY



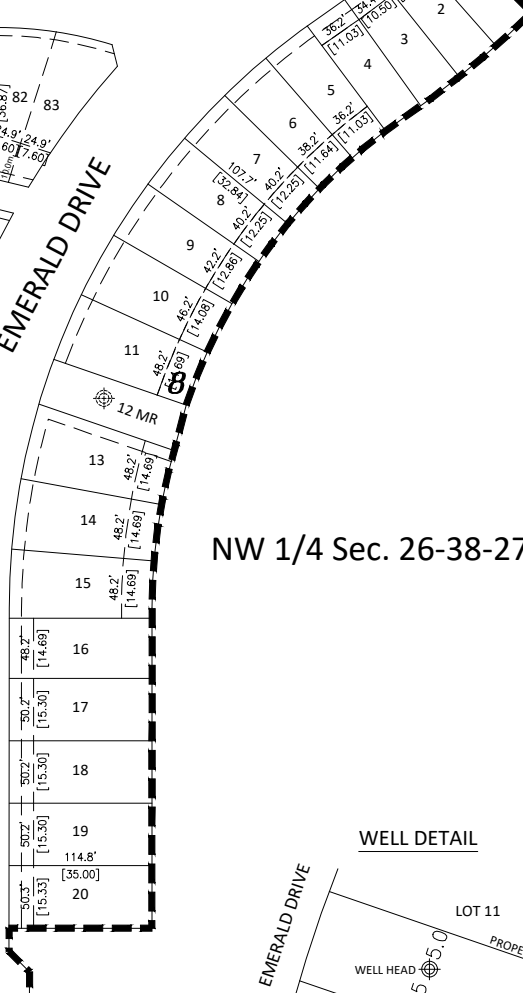
EARL CLOSE



30th AVENUE

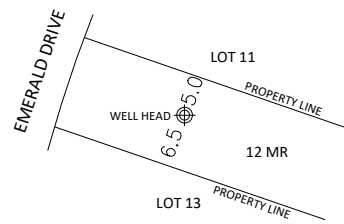


EMERALD DRIVE



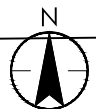
NW 1/4 Sec. 26-38-27 W4M

WELL DETAIL



Lot 1, Plan 002 1154

SW 1/4 Sec. 26-38-27 W4M



Evergreen Phase 2  
 Lotting Plan  
 City of Red Deer

Prepared for:  
 Melcor Developments  
 Red Deer, Alberta



DRAWN BY: SAS  
 CHECKED BY:  
 SCALE: NTS  
 PROJECT #: 112849532

January, 2020