



Existing Properties

CALGARY

Kensington* **RETAIL | OFFICE** Crowfoot Business Centre* **RETAIL | OFFICE**

RED DEER

Liberty Crossing* **RETAIL** McKenzie Industrial **INDUSTRIAL**

LETHBRIDGE

Melcor Centre* **OFFICE**

Ongoing Developments

CALGARY

The District at North Deerfoot **RETAIL | OFFICE | INDUSTRIAL**

RED DEER

Clearview Market* **RETAIL | OFFICE**

AIRDRIE

Kingsview Market* **RETAIL**

CHESTERMERE

Chestermere Station **RETAIL**

Future Opportunities

CALGARY

Greenwich **RETAIL | OFFICE**

SYLVAN LAKE

Vista Ridge

RETAIL

* Proudly owned & professionally managed by Melcor REIT

Kensington

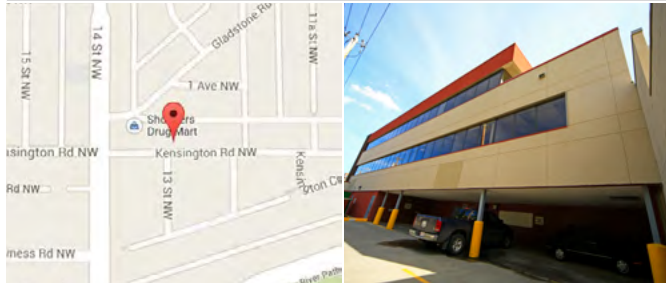
1422 Kensington Road NW | Calgary

[brochure](#)

Access to Sunnyside C-Train Station

- Pedestrian friendly, central location
- Access to C-Train and major bus routes
- In the heart of Calgary's urban village
- Close to all amenities
- Parking: \$175 u/g | \$50 surface

Locator Map



		Vitals
Operating Costs:		\$20.10
Parking:		1:600
		Leasing Inquiries
		Nola DeCecco
		780.945.4812
		ndececco@melcor.ca

Suite	Area (sf)	Available	Comment
102	1,643	Immediately	Retail space
200	1,108	Immediately	Developed space

Crowfoot Business Centre

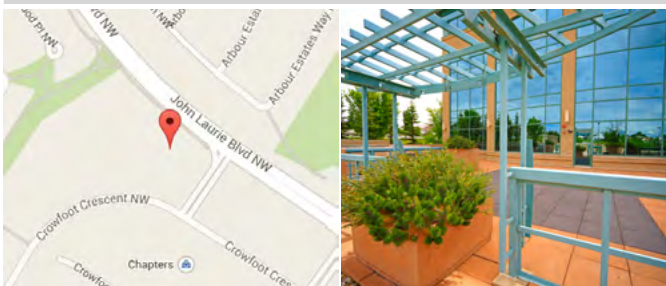
400 Crowfoot Crescent NW | Calgary

[brochure](#)

Walking distance from C Train

- Excellent access to all amenities and services
- Access to C Train and major bus routes
- Located near Crowchild Trail and John Laurie Boulevard
- Equipped with large terrace for tenants

Locator Map



		Vitals
Operating Costs:		\$21.22
Parking:		1:1,120
		Leasing Inquiries
Brock Evans/Cody Scott		Nola DeCecco
Cushman & Wakefield		780.945.4812
403.261.1111		ndececco@melcor.ca

Suite	Area (sf)	Available	Comment
206	4,883	Immediately	Developed space with rooftop patio
403N	2,147	Immediately	Developed space
406	1,284	Immediately	Developed space

Liberty Crossing

#409 & 411 Lantern Street | Red Deer

[brochure](#)

Located directly off of Queen Elizabeth II HWY

- Great visibility on a high traffic road
- Excellent retail corridor on Gasoline Alley
- Easy access and egress
- Located in close proximity to Costco, Staples and Cineplex Odeon

Major Tenants

- The Hideout Eats & Beats
- Wolverine Gun & Tackle
- SML Entertainment

Major Nearby Retailers:

- Costco
- Tim Hortons
- Petro Canada



		Vitals
Household Income:		\$61,393
Operating Cost:		\$6.23
		Leasing Inquiries
		Nola DeCecco
		780.945.4812
		ndececco@melcor.ca

Suite	Area (sf)	Available	Comment
100	22,129	Immediately	Developed space
108	9,229	Immediately	End cap

Melcor Centre

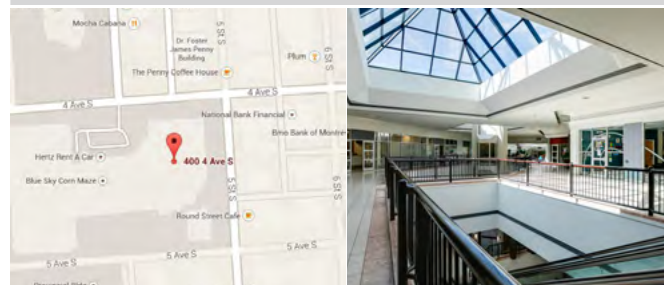
400 4th Avenue S | Lethbridge

[brochure](#)

On-site security and management

- Prime downtown location
- Covered and surface parking
- Ideal for medical or professional offices
- More opportunities available in this property - visit melcor.ca or contact us for complete listings

Locator Map



		Vitals
Operating Costs:		\$12.42
Parking:		1:1,100
		Leasing Inquiries
Ashley Soames		Grace Duff
Avison Young		403.327.6211
403.942.6692		gduff@melcor.ca

Suite	Area (sf)	Available	Comment
154	1,115	Immediately	Developed space
214	505	Immediately	Developed space
239 - 244	1,802 - 11,288	Immediately	Multiple suites with demising options
404	1,759	Immediately	Developed space

MELCOR

MELCOR

The District at North Deerfoot

brochure

Deerfoot Trail | Country Hills Blvd | Calgary

A Mixed-Use Lifestyle Campus

- Amenities include showers, running trails, & outdoor fitness stations
- Easy access to downtown Calgary
- Preleasing office space with underground parking
- Office, retail and industrial opportunities



Major Tenants	Zoning	Office Floors	Vitals
<ul style="list-style-type: none"> • McDonalds • Starbucks • Shell • Subway • Micro-Watt 	I-G (Industrial General)	5	Traffic Count: 98,000 Parking: 103 (u/g) 206 surface Office/Industrial: Daniel Eggert, Chris Thompson/Alistair Corbett, Melcor Leasing Inquiries: 780.945.4658, 403.263.4444

Suite	Area (sf)	Available	Comment
Phase 4 CRU B1	+/- 1,530	Immediately	Call for details
Phase 4 CRU B4	+/- 1,345	Immediately	Call for details
Phase 4 CRU C	+/- 1,000 - 10,600	Immediately	Call for details
Office	1,200 - 96,000	Preleasing 2020	Underground parking

Clearview Market

brochure

CRU B | 47 Clearview Market Way
CRU C | 8 Conway Street | Red Deer

A Neighbourhood Shopping Centre

- Caters to the under-served northeast of Red Deer
- Family-friendly spray park
- Final CRU began construction in July 2015



Major Tenants	Vitals
<ul style="list-style-type: none"> • Shoppers Drug Mart • CIBC • McDonalds • RBC • Browns SocialHouse • Loblaws 	Operating Costs: \$12.65 - \$14.18 Leasing Inquiries: Scott Sowinski, Gary Killips, Melcor, Cushman & Wakefield 780.945.2795, 780.420.1177

Suite	Area (sf)	Available	Comment
CRU B - Unit 115	1,774	Immediately	Developed space
CRU C - Unit 170	1,357	Immediately	Undeveloped space; end cap
CRU Z - Unit 125	1,431	Immediately	Undeveloped space
Ph 2 CRU 1 - 11	1,200 - 13,000	Q3-2020	Pre-leasing - Call for details

Kingsview Market

brochure

Highway 2 & Yankee Blvd | Airdrie

A Regional Power Centre

- Exposure to high traffic volume
- Key location directly off of Queen Elizabeth II Highway
- Connected to regional path system and adjoining King's Heights community



Major Tenants	Vitals
<ul style="list-style-type: none"> • Shoppers Drug Mart • Home Hardware • Starbucks • Tim Hortons • BMO • Save-On Foods 	Traffic Count: 24,007 Household Income: \$134,101 Office/Industrial: Daniel Eggert, Chris Thompson/Alistair Corbett, Melcor, CBRE Leasing Inquiries: 780.945.4658, 403.263.4444

Suite	Area (sf)	Available	Comment
CRU G1 - 140	+/- 1,183	Immediately	Call for details
CRU G1 - 170	2,098	Immediately	Developed space with patio
CRU G2	1,000 - 9,351	Immediately	Call for details
Junior, Anchor, CRU, PAD	1,200 - 20,000	Pre-leasing	Call for details

Chestermere Station

brochure

Chestermere Blvd & Marina Drive
Chestermere

Chestermere's Premiere Shopping Destination

- Ideal mix of national and local tenants
- Neighbourhood shopping centre for The Shores of Chestermere and Westmere communities
- Master-planned development near established residential neighbourhoods



Locator Map	Vitals
	Traffic Count: 22,960 Household Income: \$142,832 Leasing Inquiries: Daniel Eggert, Melcor, 780.945.4658

Suite	Area (sf)	Available	Comment
202 CRU B	1,339	Q3-2020	Developed space
212 CRU B	1,342	Immediately	Developed space
215 CRU B	1,344	Immediately	Developed space
216 CRU B	1,538	Immediately	Developed space
Office/CRU M/N	9,967 - 12,465	2020	Call for details

MELCOR

MELCOR

McKenzie Industrial

469 McCoy Drive | Red Deer

[brochure](#)



Easy Access to the QEII Highway

- Close to nearby retail services
- Bay depths of 130' with 28' ceilings
- Leasing is 85% complete on 66,000 sf multi-bay building

Major Tenants

- NCS Oilfield Services
- ThruTubing Solutions
- Schlumberger
- SNC Lavalin
- NOVA Chemicals

Vitals

Zoning: MI - Medium Industrial
Parking: 102 stalls

Leasing Inquiries

Nola DeCecco
780.945.4812
ndececco@melcor.ca

Suite	Area (sf)	Available	Comment
122	3,964	Immediately	Industrial space
126	3,938	Immediately	Industrial space

Greenwich

Highway 1 & 83 Street | Calgary

[brochure](#)



A Mixed-Use Lifestyle Campus

- Located directly off the TransCanada Highway
- Master-planned development near established residential neighbourhoods
- Anchored by Calgary Farmers' Market West (2021)

Locator Map



Vitals

Traffic Count: 60,000
Household Income: \$146,259

Leasing Inquiries

Daniel Eggert
Melcor
780.945.4658

Suite	Area (sf)	Available	Comment
CRU, Office, PAD, Retail	1,200 - 20,000	2020	Call for details

Vista Ridge

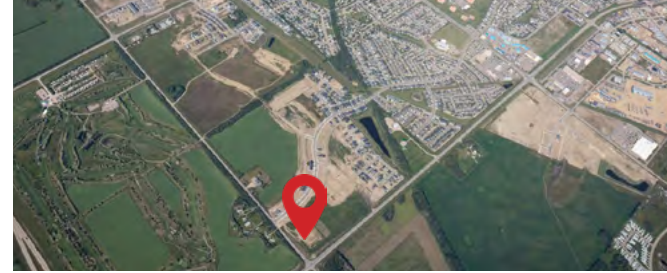
NW Corner of Highway 20
& Memorial Drive | Sylvan Lake



Neighbourhood shopping centre

- Serving the Sylvan Lake community with a population of 14,816

Locator Map



Vitals

Traffic Count: 27,180
Household Income: \$104,247

Leasing Inquiries

Scott Sowinski
Melcor
780.945.5795

Suite	Area (sf)	Available	Comment
CRU	12,500	Q4-2020	Call for details