

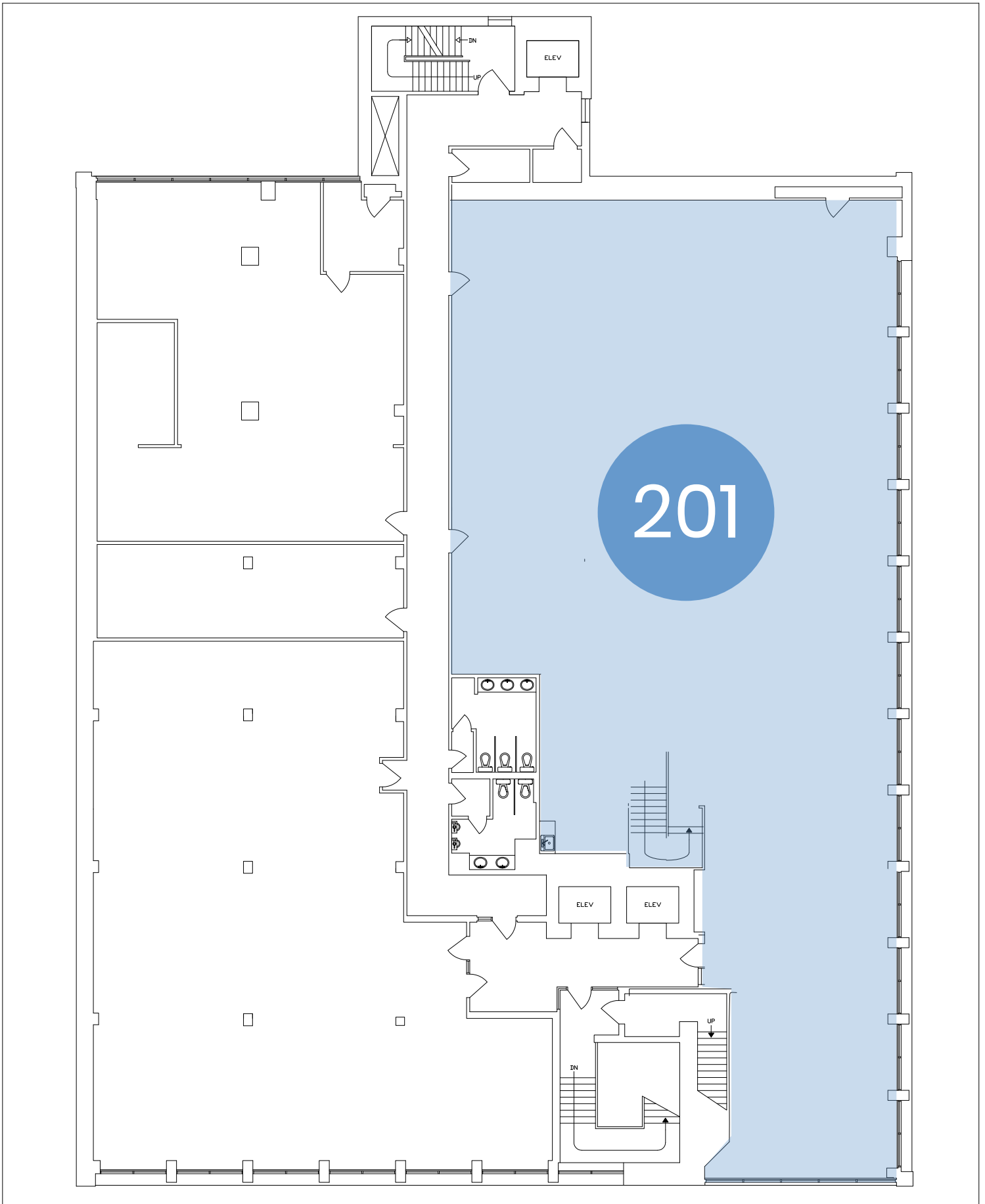
MELCOR

MELTON BUILDING
10310 JASPER AVENUE
EDMONTON, AB

MAIN FLOOR

UNIT 10304 - 3,788 SF

Second Floor Connected In Unit
Additional 6,359 SF



MELCOR

MELTON BUILDING
10310 JASPER AVENUE
EDMONTON, AB

SECOND FLOOR

UNIT 201 – 6,359 SF

Main Floor Connected In Unit
Additional 3,788 SF